

# VSC System DTC C1234: Yaw Rate Sensor

**Service Category** Brake

**Section** Brake Control/Dynamic Control System

**Market** USA

Toyota Supports  
 ASE Certification 

## Applicability

YEAR(S)	MODEL(S)	ADDITIONAL INFORMATION
2001 - 2002	Sequoia	

## Introduction

Some 2001 – 2002 model year Sequoia vehicles may exhibit intermittent VSC activation. After the activation, Diagnostic Trouble Code (DTC) C1234 is stored in the skid control Electronic Control Unit (ECU) memory. Follow the Repair Procedure in this bulletin to address this condition.

### NOTE

- This Service Bulletin is ONLY applicable if DTC C1234 is present. If DTC C1234 is NOT present, this Service Bulletin is NOT applicable.
- The yaw rate sensor is available as a separate service part allowing it to be replaced separately instead of the entire yaw rate sensor assembly (Yaw Rate Sensor, Decel Sensor & Bracket). Ensure that the NEW service part number is ordered for the yaw rate sensor.

## Warranty Information

OP CODE	DESCRIPTION	TIME	OFF	T1	T2
N/A	Not Applicable to Warranty	–	–	–	–

## Parts Information

PART NUMBER		PART NAME	QTY
PREVIOUS	NEW		
89180-0C010	89183-0C010	Yaw Rate Sensor (Including Two Nuts)	1

# VSC System DTC C1234: Yaw Rate Sensor

## Required Tools & Equipment

REQUIRED TOOLS & MATERIAL	QTY
Torque Wrench	1

REQUIRED EQUIPMENT	SUPPLIER	PART NUMBER	QTY
Techstream 2.0*	ADE	TS2UNIT	1
Techstream Lite		TSLITEPDLR01	
Techstream Lite (Green Cable)		TSLP2DLR01	

\* Essential SST.

**NOTE**

- Only ONE of the Techstream units listed above is required.
- Software version 12.20.024 or later is required.
- Additional Techstream units may be ordered by calling Approved Dealer Equipment (ADE) at 1-800-368-6787.

## Repair Procedure

1. Confirm the ABS/TRAC/VSC skid control computer is set with DTC C1234.
2. Check for an open and short circuit in the yaw rate sensor harness and connector between the yaw rate sensor and skid control ECU.

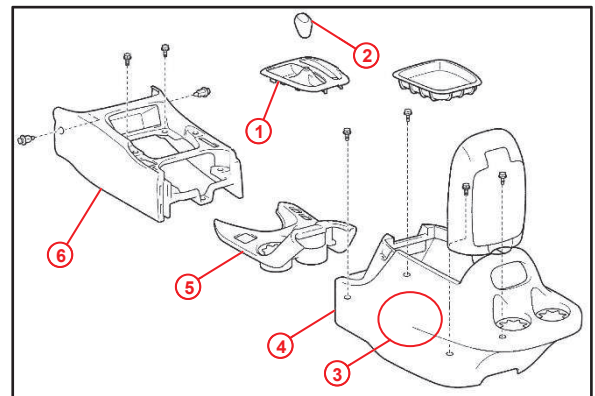
Is there an open or short circuit with DTC 1234 set?

- **YES** — This bulletin does NOT apply. Continue diagnosis using the applicable Repair Manual.
- **NO** — Continue to step 3.

3. Remove the console box.  
Refer to TIS, applicable model and model year Repair Manual:

- [2001](#) / [2002](#) Sequoia:  
*Vehicle Interior – Instrument Panels/Trim – “Instrument Panel: Removal”*

Figure 1.



1	4WD: Shifting Hole Cover
2	4WD: Shifting Lever Knob
3	Yaw Rate Sensor Location
4	Rear Console Box
5	Upper Console Panel
6	Front Console Box

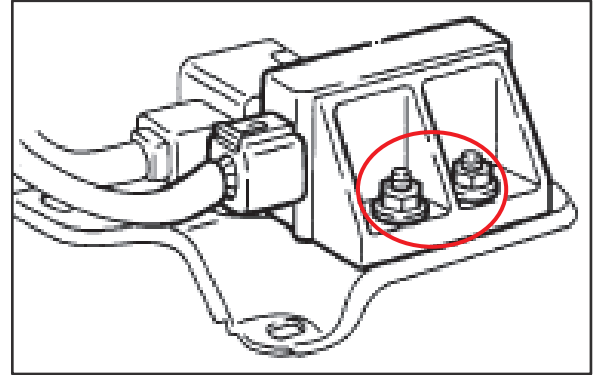
## VSC System DTC C1234: Yaw Rate Sensor

---

### Repair Procedure (Continued)

4. Remove the two fixed nuts as shown in the figure and disconnect the wire harness to remove the original yaw rate sensor.

Figure 2.



5. Install the NEW yaw rate sensor in the correct orientation and torque the nuts.  
**Torque: 7 N\*m (5 ft\*lbf)**
6. Connect the wire harness to the yaw rate sensor.
7. Reinstall the center console.  
Refer to TIS, applicable model and model year Repair Manual:
  - [2001 / 2002](#) Sequoia:  
*Vehicle Interior – Instrument Panels/Trim – [“Instrument Panel: Installation”](#)*
8. Perform a zero point calibration. Reference Service Bulletin No. BR001-02, [“VSC Related Zero Point Calibration and Sensor Check.”](#)
9. Clear the DTC and confirm the repair.