



Self-diagnosis data

Self-diagnosis parameters

TEXA

Workshop data

Company name	Roy Ag Services		
Address	503, 2nd Ave	Province	
City	Roy	Postcode	59471
Telephone number		E-mail	fixn_junk@protonmail.com
Operator	Dustin		

Vehicle data

License plate number	DCD644	VIN	1FT7W3BT2EEB29213
Make	FORD	Model	F Series Super Duty
Engine type	Power Stroke	Vehicle ID*	Power Stroke 6.7
Outline		Period	[2011>2016]

* identification code referred to the VIN or to the engine code

Instrumentation

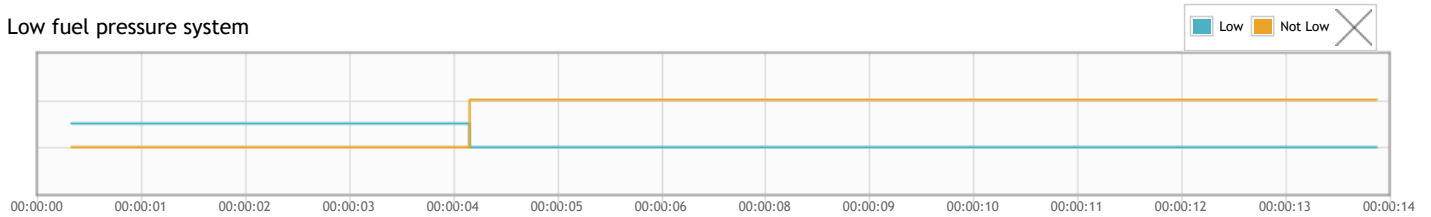
SW version	TEXA IDC5 Truck 51.1.2
VCI serial number	DNRHT002112

General test data

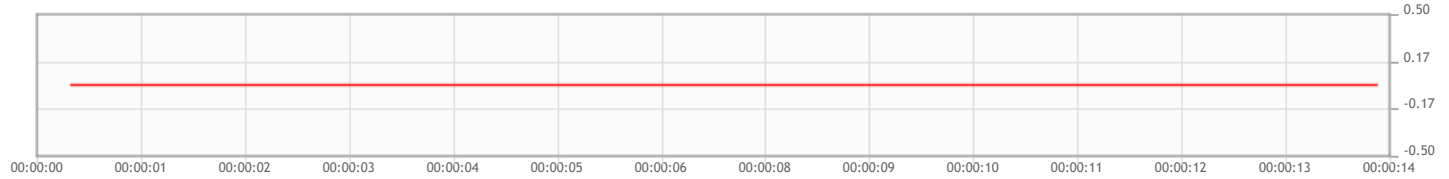
Date	2/21/2022
Start time	2/21/2022 9:56:18 AM
End time	2/21/2022 9:56:32 AM

Self-diagnosis data

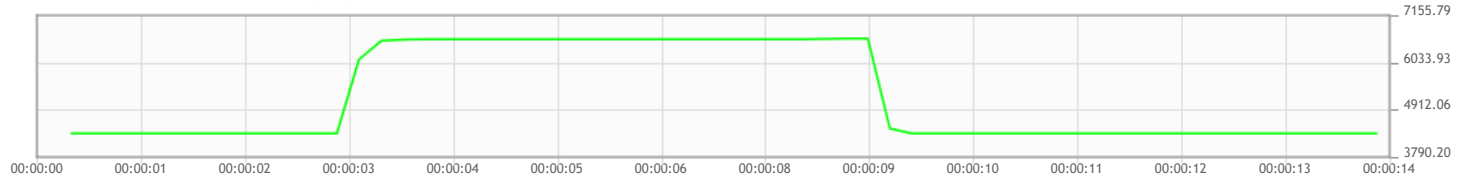
Low fuel pressure system



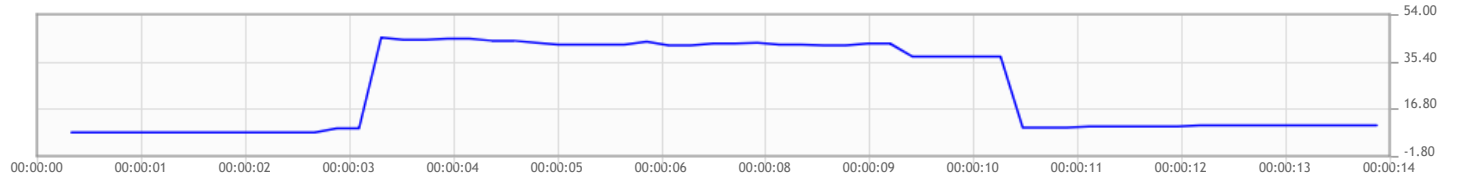
Fuel rail pressure A command (PSI)



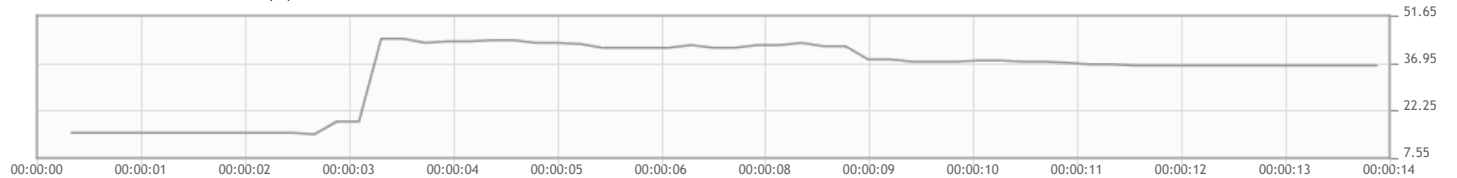
Fuel Rail Pressure Commanded (PSI)



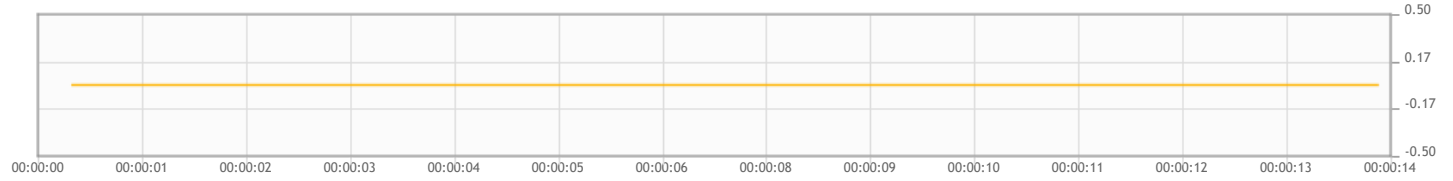
Fuel pressure control valve (%)



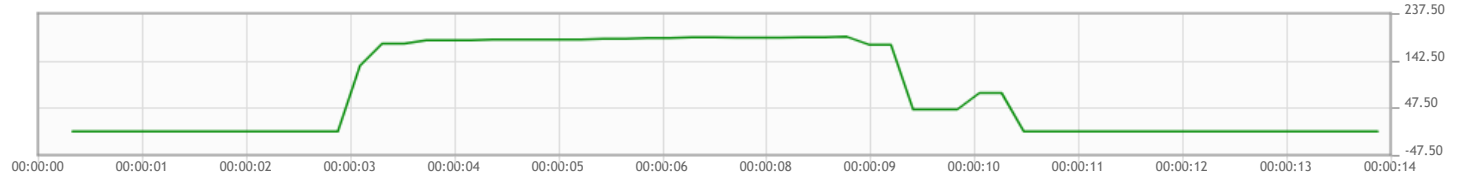
Fuel Volume Control Valve (%)



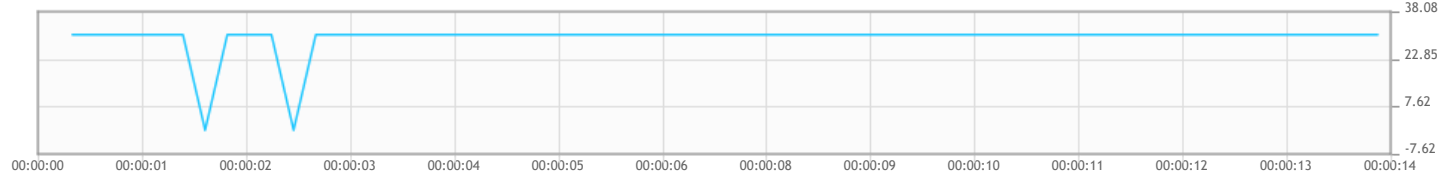
Fuel rail pressure (PSI)



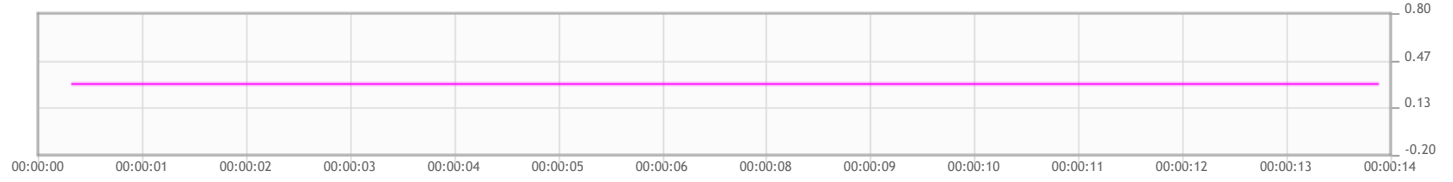
Engine speed (rpm)



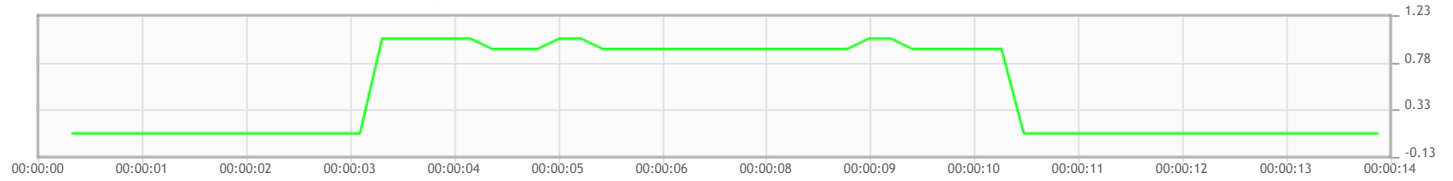
Fuel Rail Pressure A (PSI)



Fuel rail pressure (V)



Fuel Pressure Relief Control Valve (Current) (A)



Stamp and signature
