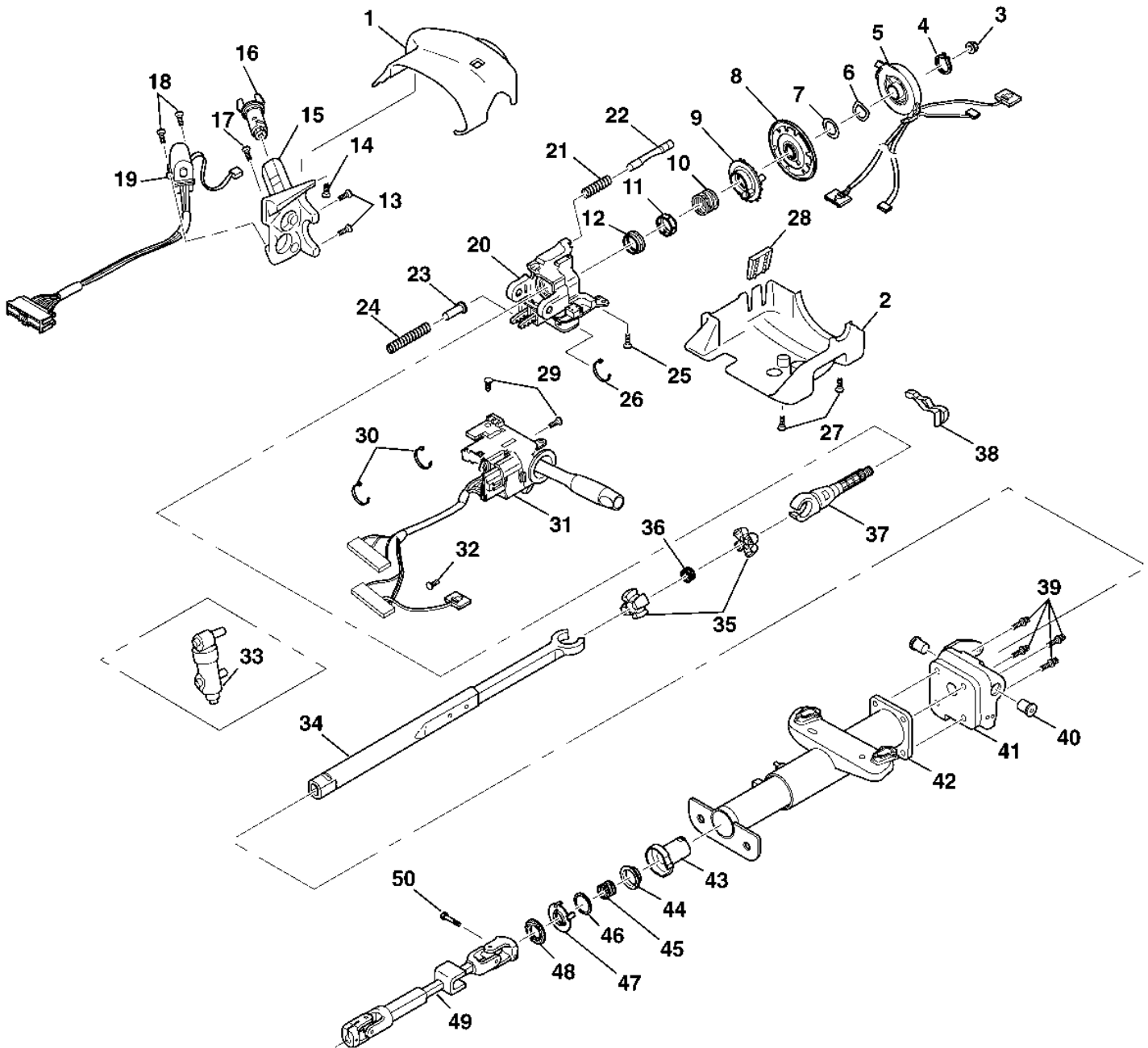


Steering Column Disassembled View (Floor Shift)

Tilt Floor Shift



- (1) Upper Shroud
- (2) Lower Shroud
- (3) Flanged Prevailing Torque Nut
- (4) Retaining Ring
- (5) SIR Coil Assembly
- (6) Wave Washer
- (7) Bearing Retainer
- (8) Shaft Lock Shield Assembly
- (9) Turn Signal Cancel Cam Assembly
- (10) Upper Bearing Spring

- (11) Upper Bearing Inner Race Seat
- (12) Inner Race
- (13) Pan Head Tapping Screw
- (14) TORX® Head Screw
- (15) Lock Module Assembly
- (16) [Steering Column Lock Cylinder Set](#)
- (17) Pan Head Tapping Screw
- (18) Tapping Screw
- (19) Ignition and [Key Alarm Switch Assembly](#)
- (20) Steering Column Tilt Head Assembly
- (21) Lock Bolt Spring
- (22) Lock Bolt Assembly
- (23) Spring Guide
- (24) Tilt Spring
- (25) TORX® Head Screw
- (26) Wire Harness Strap
- (27) Pan Head Tapping Screw
- (28) Shroud Protector
- (29) Pan Head Tapping Screw
- (30) Wire Harness Strap
- (31) Turn Signal and Multifunction Switch Assembly
- (32) Axial Position Assurance Connector
- (33) Steering Column Electric Park Lock
- (34) Lower Steering Shaft Assembly
- (35) Centering Sphere
- (36) Joint Preload Spring
- (37) Race and Upper Shaft Assembly
- (38) Tilt Lever Assembly
- (39) TORX® Head Screw
- (40) Pivot Pin
- (41) Steering Column Support Assembly
- (42) Steering Column Jacket Assembly
- (43) Adapter and Bearing Assembly
- (44) Lower Bearing Seat
- (45) Lower Bearing Spring
- (46) Lower Bearing Retainer
- (47) Sensor Retainer
- (48) Steering Shaft Seal
- (49) Intermediate Steering Column Shaft Assembly
- (50) Pinch Bolt

---

"Portions of materials contained herein have been reprinted with permission of General Motors Corporation, Service and Parts Operations" License Agreement #0410810.